

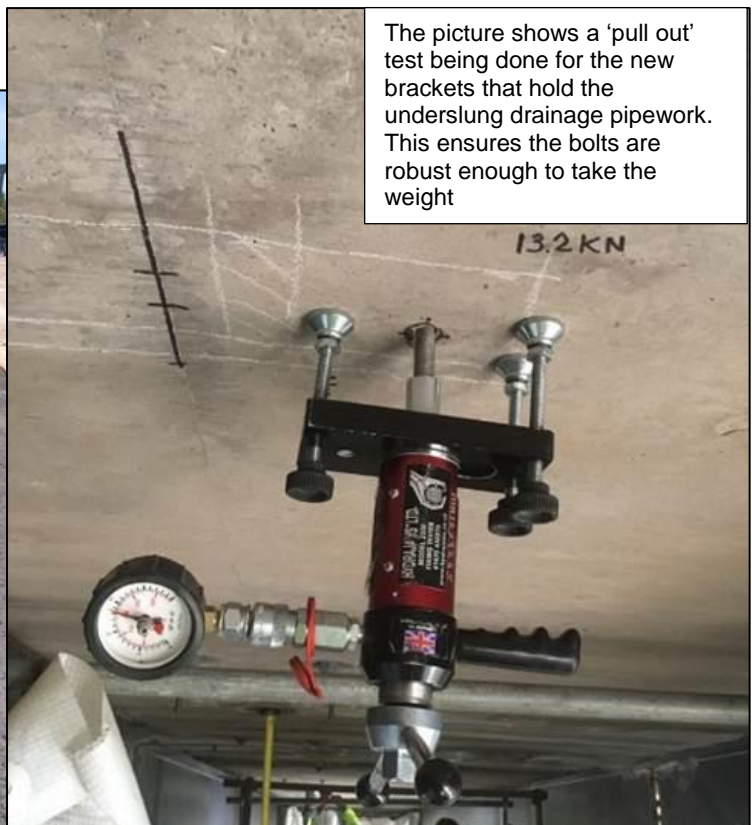
M5 J1-2 Oldbury Viaduct Major Renewal Scheme

e-bulletin – 17 May 2019

This week we have progressed the waterproofing operation to the hard shoulder, lane 1 and 2 areas are now around 65% complete.

We recovered 24 vehicles from our free recovery areas this week.

Surfacing to hard shoulder and lane 1



This weeks' bulletin covers local motorway network closures and local road closures.

Friday 17 May 2019 20:00 – 06:00 Monday 20 May 2019

M5 J2 - Northbound entry slip lane closure

Friday 17 May 2019

21:00 – 06:00 M5 Northbound J2 to J1 – Full Closure

22:00 – Midnight A457 Birmingham Rd, Oldbury - Eastbound - lane 1 closure

Monday 20 May 2019

21:00 – 06:00 M5 Northbound J2 to J1 – Full Closure

20:00 – 06:00 M5 J2 - Northbound entry slip lane closure

22:00 – Midnight A457 Birmingham Rd, Oldbury - Eastbound - lane 1 closure

Tuesday 21 May 2019

20:00 – 06:00 M5 J1 - Southbound entry slip lane closure

21:00 – 06:00 M5 Southbound J1 to J2 – Full Closure

20:00 – 06:00 M5 J2 - Northbound entry slip lane closure

20:00 – 06:00 M5 Northbound J4a to M42 J1 link road closure

Wednesday 22 May 2019

20:00 – 06:00 M5 J1 - Southbound entry slip lane closure

21:00 – 06:00 M5 Southbound J1 to J2 – Full Closure

20:00 – 06:00 M5 J2 - Northbound entry slip lane closure

20:00 – 06:00 M5 Northbound J4a to M42 J1 link road closure

Thursday 23 May 2019

20:00 – 06:00 M5 Northbound J4a to M42 J1 link road closure

If you have any concerns or issues regarding the works on the M5 or local road closures, please don't hesitate to contact us, by calling 0300 123 5000. More information about the scheme can be found online at <https://highwaysengland.co.uk/projects/m5-junction-1-to-2-oldbury-viaduct/>



Find us on Facebook, search for 'Oldbury Viaduct'